

Operating instructions



MAXXI II



Clarke®

EN	6
DE	15
FR	23
NL	31
IT	39
NO	47
SV	54
DA	61
FI	68
ES	75
PT	83
EL	91
TR	99
SL	106
HR	113
SK	120
CS	128
PL	135
HU	143
RO	151
BG	159
RU	167
ET	175
LV	182
LT	189
JA	196
ZH	203
KO	210
TH	217
MS	224

Handle adjusting



Before operation. Wet pick-up



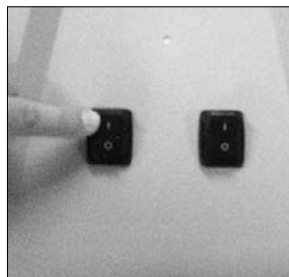
Before operation. Dry pick-up



Hose handling



Switch on



Emptying MAXXI II - 35



Emptying by drainhose MAXXI II - 55/75



Emptying by spout MAXXI II - 55/75



Cartridge filter



Dust bag replacement

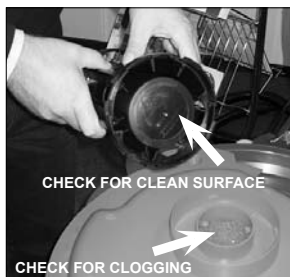


Sack filter/wet filter

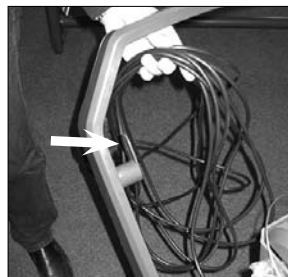


Float





Cord handling



Storage



1 Important safety instructions

1.1 Symbols used to mark instructions

ANGER



Danger that leads directly to serious or irreversible injuries, or even death.

ARNING



Danger that can lead to serious injuries or even death.

CAUTION



Danger that can lead to minor injuries and damage.



Before starting up your vacuum cleaner for the first time, this instruction manual must be read through carefully. Save the instructions for later use.

1.2 Instructions for use



Besides the operating instructions and the binding accident prevention regulations valid in the country of use, observe recognised regulations for safety and proper use.

1.3 Purpose and intended use

This vacuum cleaner is to be used for commercial or for household use. Accidents due to misuse can only be prevented by those using the machine.

READ AND FOLLOW ALL SAFETY INSTRUCTIONS.

This machine is suitable for picking up dry, non-flammable dust and liquids.

Any other use is considered as improper use. The manufacturer accepts no liability for any damage resulting from such use. The risk for such use is borne solely by the user. Proper use also includes proper operation, servicing and repairs as specified by the manufacturer.

1.4 Important warnings

ARNING



- To reduce the risk of fire, electric shock, or injury, please read and follow all safety instructions and caution markings before use. This vacuum cleaner is designed to be safe when used for cleaning functions as specified. Should damage occur to electrical or mechanical parts, the cleaner and / or accessory should be repaired by a competent service station or the manufacturer before use in order to avoid further damage to the machine or physical injury to the user.
- This machine is for indoor use only.
- Do not leave the machine when it is plugged in. Unplug from the socket when not in use and before maintenance.
- Do not use with damaged cord or plug. To unplug grasp the plug, not the cord. Do not handle plug or cleaner with wet hands. Turn off all controls before unplugging.
- Do not pull or carry by cord, use cord as a handle, close a door on cord, or pull cord around sharp edges or corners. Do not run cleaner over cord. Keep cord away from heated surfaces.

WARNING

- Keep hair, loose clothing, fingers and all parts of the body away from openings and moving parts. Do not put any objects into openings or use with opening blocked. Keep openings free of dust, lint, hair, and anything else that could reduce the flow of air.
- This machine is not suitable for picking up hazardous dust.
- Do not use to pick up flammable or combustible liquids such as gasoline, or use in areas where they may be present.
- Do not pick up anything that is burning or smoking, such as cigarettes, matches or hot ashes.
- This appliance can be used by children aged from 8 years and above and persons with reduced physical, sensory or mental capabilities or lack of experience and knowledge if they have been given supervision or instruction concerning use of the appliance in a safe way and understand the hazards involved.
- Children shall be supervised to make sure that they do not play with the appliance.
- Cleaning and user maintenance shall not be made by children without supervision.
- Use extra care when cleaning on stairs.
- Do not use unless filters are fitted.
- If the cleaner is not working properly or has been dropped, damaged, left outdoors, or dropped into water, return it to a service center or dealer.
- If foam or liquid escapes from the machine, switch off immediately.

1.5 Double-insulated appliances

**CAUTION**

- Use only as described in this manual and only with the manufacturer's recommended attachments.
- **BEFORE YOU PLUG IN YOUR CLEANER**, check the rating plate at the cleaner to see if the rated voltage agrees within 10% of the voltage available.
- This appliance is provided with double insulation. Use only identical replacement parts. See instructions for servicing double insulated appliances.

In a double-insulated appliance, two systems of insulation are provided instead of grounding. No grounding means is provided on a double-insulated appliance, nor should a mean for grounding be added to the appliance. Servicing a double-insulated appliance requires extreme care and knowledge of the system, and should be done only by qualified service personnel. Replacement parts for a double-insulated appliance must be identical to the parts they replace. A double insulated appliance is marked with the words "DOUBLE INSULATION" or "DOUBLE INSULATED." The symbol (square within a square) may also be used on the product.

The machine is equipped with a specially designed cord which if damaged, must be replaced by a cord of the same type. This is available at authorised service centres and dealers and must be installed by trained personnel.

CAUTION

- Wet cleaner shall always have the Cartridge Filter, Wet Filter and the Float System mounted in the machine during both WET AND DRY operations. Please also notice that the fill factor at the container may vary using a sack filter during wet pick-up operations.
- Clean the water level limiting device regularly and examine it for signs of damage.
- This machine shall be stored indoors only.

2 Control / Operation

2.1 Starting and operating of the machine

Check that the electrical switch is switched off (in position 0). Check that suitable filters are installed in the machine. Then connect the suction hose into the suction inlet at the machine by pushing the hose forward until it fits firmly in place at the inlet. Then connect the two tubes with the hose handle, twist the tubes in order to ensure that they are properly fitted. Attach suitable nozzle to the tube. Choose nozzle depending on what type of material that is to be picked-up. Connect the plug into a proper electrical outlet. Put the electrical switch into position 1 in order to start the motor. Some variants have two motors/fan units and two electrical switches - one switch for each motor.

2.2 Before wet pick-up

CAUTION

The machine is equipped with a float system that shuts off the airflow through the machine when the maximum liquid level is reached. Never pick up liquid without the float body in place. To control: Loosen the latch at the front of the motor top. Then open the motor top. Check that the float basket and float valve are mounted at the filter plate. Remounting: Put back the motor top to the container. Then tighten the latch so that the motor top is properly secured. Always use a chemical defoamer when picking up water containing foaming detergents. Use a defoamer recommended by the detergent manufacturer. During wet suction of foam: On two-motor-machines always run the machine with only one motor on, in order to avoid extreme foaming and ensure the fill factor of the container.

2.3 Wet pick up

The machine is equipped with a float body that shuts off the airflow through the machine when the maximum liquid level is reached. You will then hear a noticeable change of the sound from the motor and notice that the suction power decreases. When this occurs, switch the machine off. Disconnect the machine from the socket.

2.4 Emptying after wet pick-up

Before emptying the container, unplug the vacuum cleaner. Always empty and clean the container and the float system after picking-up liquids. Never pick up liquid without the float system and filter(s) installed in the machine.

- 2.5 Emptying: MAXXI II 35 I** Release the front latch by pulling the lower parts outwards so that the motor top is released. Open the motor top and lift off. Remove the float system and filter(s) from the cleaner.
Disconnect the hose from the inlet by pulling out the hose.
Empty by tilting the container backwards and pour the liquids into a floor drain or similar. Wipe the float valve and float basket with a damp cloth before the motor top is reinstalled to the container.
Put back the filter(s) and the motor top to the container. Secure the motor top with the front latch.

- 2.6 Emptying: MAXXI II 55/75 I** Drain hose: MAXXI II have a draining hose. Detach the drain hose from the bracket by pulling hose downwards from the cleaner. Place the drain hose end near a floor drain and then remove the plug at hose end. The natural pressure will then drain the liquids from the container.
Emptying from the container spout: Take off the rubber cap at the back of the container. The drain hose must be attached during emptying from the container. Grasp with one hand at the handle at the lower part of the container and release the lock. To avoid movement of the trolley - place one foot at the basepart of the trolley. Then tilt the container backwards and pour the liquids into a floor drain or similar.
Open up the motor top and wipe the float valve and the float basket with a damp cloth.
Close the motor top to the container. Secure front latch.

CAUTION



Be careful not to interfere hands, fingers etc. with the tilting mechanism during emptying the container.

- 2.7 Emptying after dry pick-up**

Remove the electrical plug from the socket before emptying after dry pick-up. Check the filters and dustbag regularly. Release the latch by pulling them outwards so that the motor top is released. Open up the motor top from container.

Cartridge filter: To clean the filter you can either shake, brush or wash it. Wait until it is dry before you reuse it. Check the motor filter, replace it if it is clogged.

Dustbag: check bag to ensure the fill factor. Replace dust bag if necessary. Remove the old bag. The new bag is fitted by passing the cardboard piece with the rubber membrane through the vacuum inlet. Make sure that the rubber membrane is passing past the heightening at the vacuum inlet.

After emptying: Close motor top to the container. Secure with the front latch. Never pick up dry material without cartridge filter or sackfilter and dustbag fitted in the machine. The suction efficiency of the vacuum cleaner depends on the size and quality of the filter and dust bag. Therefore - use only Original filter and dust bags.

3 Maintenance

- 3.1 Maintenance of the float system** Remove the electrical plug from the socket before performing maintenance. Always empty and clean the container and the float system after picking-up liquids. Release the front latch by pulling it outwards so that the motor top is released. Open up motor top from container. Then loosen the float basket by turning the basket to the left. Remove the complete float system from motor top. A filter is located in front of the motor inlet. Check this motor filter. Replace with new filter if filter is clogged. Wipe the float valve and float basket with a damp cloth before the motor top is reinstalled to the container. Then reinstall the float valve to the float basket. Make sure that the sealed surface of the float valve is installed upwards in direction towards the motor top. To mount the float basket - fit the arrow at the basket to the arrow. Then secure the float basket by turning it to the right.

- 3.2 Maintenance** Remove the plug from the socket before performing maintenance. Before using the machine make sure that the frequency and voltage shown on the rating plate correspond with the mains voltage.
- Specifications and details are subject to change without prior notice. The accessories shown in the pictures may vary from model to model.

Always keep the cleaner in a dry place. The cleaner is designed for continuous heavy work. Depending on the number of running hours – the dust filters should be renewed. Keep the container clean with a dry cloth, and a small amount of spray polish.

For details of after sales service contact your dealer.

4 After using the cleaner

- 4.1 After use** Remove the plug from the socket when machine is not in use. Wind up the cord starting from the machine. The power cord can be wound up around the handle/hooks located on the motor top or at the container. Some variants have special storage places for accessories.
- 4.2 Transport**
- Before transporting the dirt tank, close all the locks.
 - Eventually take off the motor top/container from the trolley (MAXXI II 55/75).
 - Do not tilt the cleaner if there is liquid in the dirt tank.
 - Do not use a crane hook to lift the cleaner.
- 4.3 Storage** Store the appliance in a dry place, protected from frost.
- 4.4 Warranty** Our general conditions of business are applicable with regard to the guarantee.
- Unauthorised modifications to the appliance, the use of incorrect brushes in addition to using the appliance in a way other than for the intended purpose exempt the manufacturer from any liability for the resulting damage.
- 4.5 Recycling the cleaner** Make the old cleaner unusable.
1. Unplug the cleaner.
 2. Cut the power cord.
 3. Do not discard of electrical appliances with household waste.



As specified in European Directive 2002/96/EC on old electrical and electronic appliances, used electrical goods must be collected separately and recycled ecologically.

**Only applicable to UK.
Please read these essential
instructions**

This vacuum cleaner is designed, developed and rigorously tested to function efficiently and safely when properly maintained and used in accordance with the following instructions. These instructions have been prepared with safety and efficiency paramount.

The machine operator must be trained by a suitably qualified instructor and must understand these instructions for use, and be made aware of any relevant regulations and legislation in force at the time of use.

CAUTION



This machine is not suitable for use in explosive or inflammable atmospheres or where such atmospheres are likely to be produced by the presence of volatile liquid or inflammable gas or vapour.

In no circumstances should the power supply cord be wrapped around fingers or any part of the operators person.

The electrical supply plug must not be subjected to undue stress by pulling on the power supply cord.

Your MACHINE must only be connected to an electrical supply of the same voltage and frequency as indicated on the rating plate. Ensure that the plug fitted to the end of the power supply cord is suitable for your supply socket, if not refer to the information contained in 'Electrical Connections', or consult a qualified electrician. The electrical installation from which the supply is drawn must be maintained to current Institute of Electrical Engineers wiring regulations.

**Only applicable to UK.
Regular servicing and
inspection**

Regular servicing and inspection of your machine must be carried out by suitably qualified personnel in accordance with relevant legislation and regulations. In particular, electrical tests for earth continuity, insulation resistance, and condition of the flexible cord should be checked frequently.

In the event of any defect, the machine **MUST** be withdrawn from service, completely checked and repaired by an authorized service technician.

CAUTION



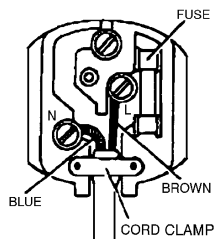
DOUBLE-INSULATED MACHINES - IMPORTANT:

This 240 volt 50 Hz. machine are fitted with a 13 amp. 3 pin moulded plug. The plug is fitted with a 13 amp. detachable fuse. The correct replacement for the fuse is identified by marking or colour coding. Only fuses that are ASTA approved to BS 1362 should be fitted. Never use the plug without the fuse cover fitted. Replacement fuse covers are available at any electrical retail outlet.

If the available socket outlet is not suitable for the plug supplied, the plug must be cut off and an appropriate plug fitted. The plug thus cut off **MUST BE DESTROYED** for safety reasons before being disposed of. Machines built for other voltages and frequencies are not normally supplied with a fitted plug.

If it is necessary to fit a plug, the wires in this power supply cord are coloured in accordance with the following code:

**Only applicable to UK.
Blue-neutral brown-live**



TO CONNECT THE NEW PLUG:

If using a three-pin plug, do not make any connection to the the terminal in the plug which is marked with the letter 'E' or by the safety earth symbol or coloured green or green & yellow. This machine is double-insulated and no earth connection is necessary.

The blue wire must be connected to the terminal in the plug which is marked with the letter 'N' or is coloured black or blue.

The brown wire which must be connected to the terminal in the plug which is marked with the letter 'L' or is coloured red or brown.

If the plug to be fitted does not conform to the above notation then consult a qualified electrician.

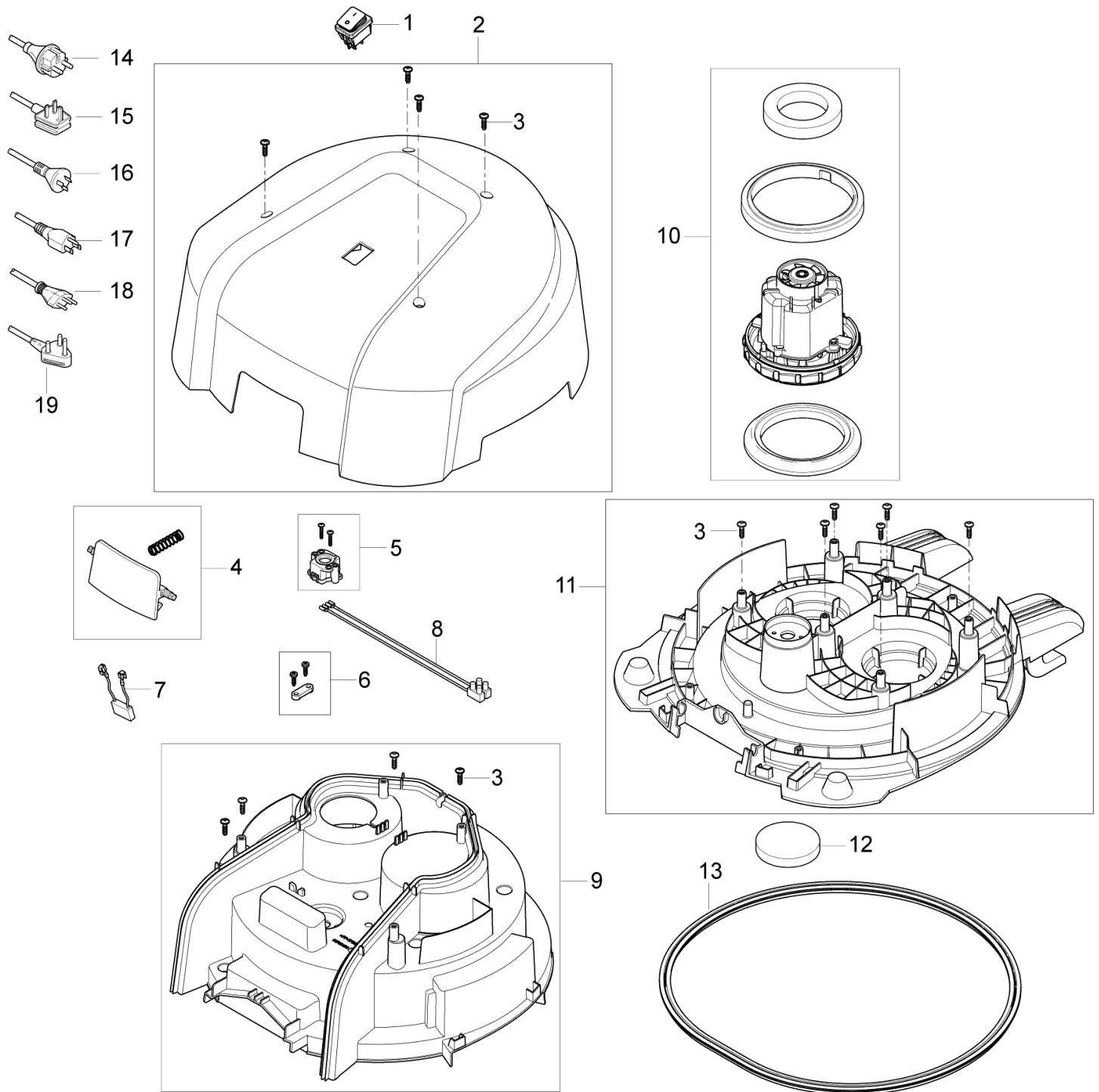
Specifications

		MAXXI II 35	MAXXI II 55/75 1 motor	MAXXI II 55/75 2 motor	MAXXI II 35	MAXXI II 55/75 1 motor	MAXXI II 55/75 2 motor	MAXXI II 35	MAXXI II 55/75 1 motor
Possible voltage, V		220-240V	220-240V	220-240V	120V	120V	120V	100V	100V
Power Plec	W	1250	1250	2400	1100	1100	2000	1250	1200
Protection grade (moist, dust)		IP24	IP24	IP24	IP24	IP24	IP24	IP24	IP24
Protection class (electrical)		II □	II □	II □	II □	II □	II □	II □	II □
Airflow	litres/sec	48	48	72	45	40	64	48	42
Vacuum	kPa	20	20	21	20	18	19	20	18
Suction power	W	250	250	390	220	170	340	250	200
Sound pressure IEC 704	dB(A)±1/2	81	82	84	81	82	84	81	82
Sound pressure BS 5415	dB(A)±1/2	62	64	66	62	64	66	62	64
Vibration ISO 5349	m/s²	<1,5 ±/ - 1	<1,5 ±/ - 1	<1,5 ±/ - 1	<1,5 ±/ - 1	<1,5 ±/ - 1	<1,5 ±/ - 1	<1,5 ±/ - 1	<1,5 ±/ - 1
Tank capacity	litres	35	55/75	55/75	35	55/75	55/75	35	55/75
Weight	kg	12,5	24,5/27	25,5/28	12,5	24,5/27	25,5/28	12,5	24,5/27

Specifications and details are subject to change without prior notice.

Model : 35605 MAXXI 55-1, MAXXI 75-1 CLARKE

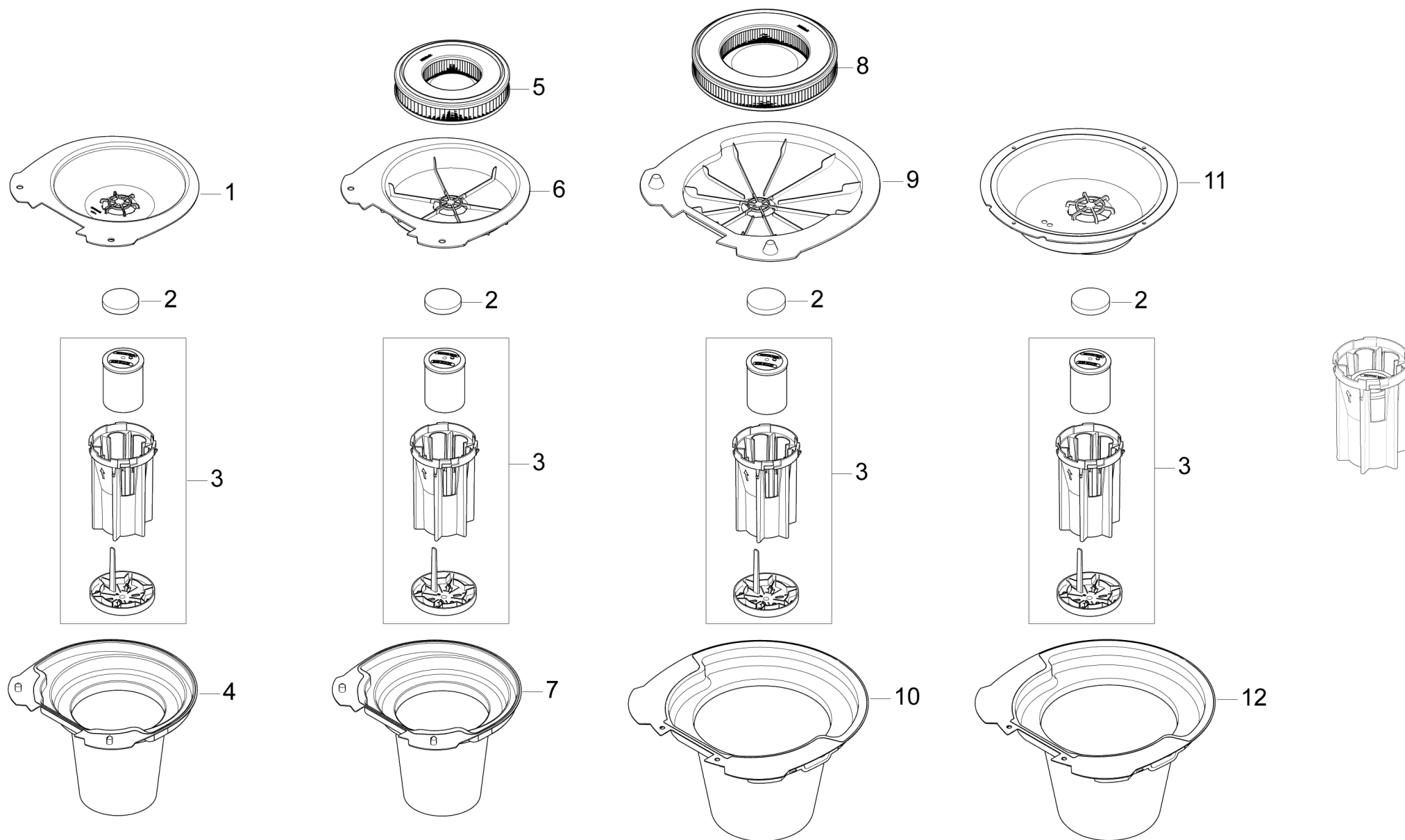
Drawing : VL50003 Top 55-1, 75-1



IA	Pos. no.	Qty.	Item no.	Item Text
	1	1	140 9537 500	SWITCH TWO POLE KIT
	10	1	302003384	MOTOR KIT 1200W 230V
	10	1	302003388	MOTOR KIT 1000W 120V
	11	1	107407248	
	12	1	140 8682 500	MOTOR FILTER
	13	1	107407249	
	14	1	12222501	CORD SET EU L 10M
	14	1	140 8262 010	CORD SET 10.5 M AU PLUG
	15	1	140 6707 000	
	16	1	107401614	CORD SET US/TW 3C 15.5M YELLOW
	17	1	82222507	
	18	1	107407242	
	2	1	107407244	
	4	1	107407236	
	5	1	107407237	
	6	1	140 6560 500	ANTI STRAIN CLIP
	7	1	48338	ANTI-INTERFERENCE CAPACITOR
	8	1	140 7042 500	WIRE INTERNAL FOR GWD 300
	9	1	107407246	

Model : 35605 MAXXI 55-1, MAXXI 75-1 CLARKE

Drawing : VL50019 Filters and bags



Model : 35605 MAXXI 55-1, MAXXI 75-1 CLARKE

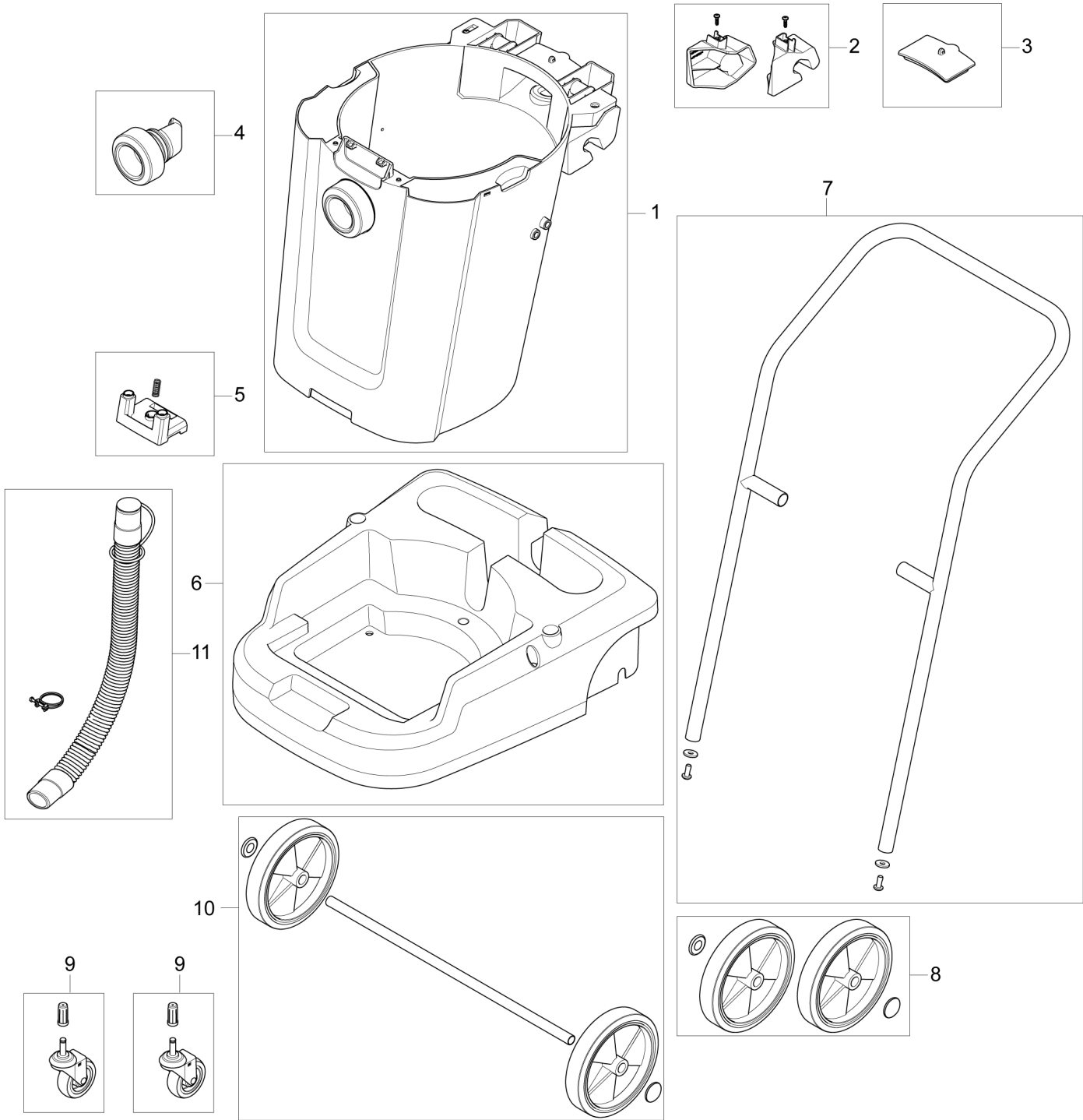
16-01-2013 11:06:30

Partlist : MAXXIII20 Filters and bags

Page : 1

IA	Pos. no.	Qty.	Item no.	Item Text
	1	1	107407295	
	10	1	107407302	
	11	1	107407303	
	12	1	107407304	
	2	1	140 8682 500	MOTOR FILTER
	3	1	140 8680 500	FLOAT BASKET
	4	1	107407296	
	5	1	107407297	
	6	1	107407298	
	7	1	107407299	
	8	1	107407300	
	9	1	107407301	

Model : 35605 MAXXI 55-1, MAXXI 75-1 CLARKE
Drawing : VL50009 Container 55 BSF, BDF



Model : 35605 MAXXI 55-1, MAXXI 75-1 CLARKE

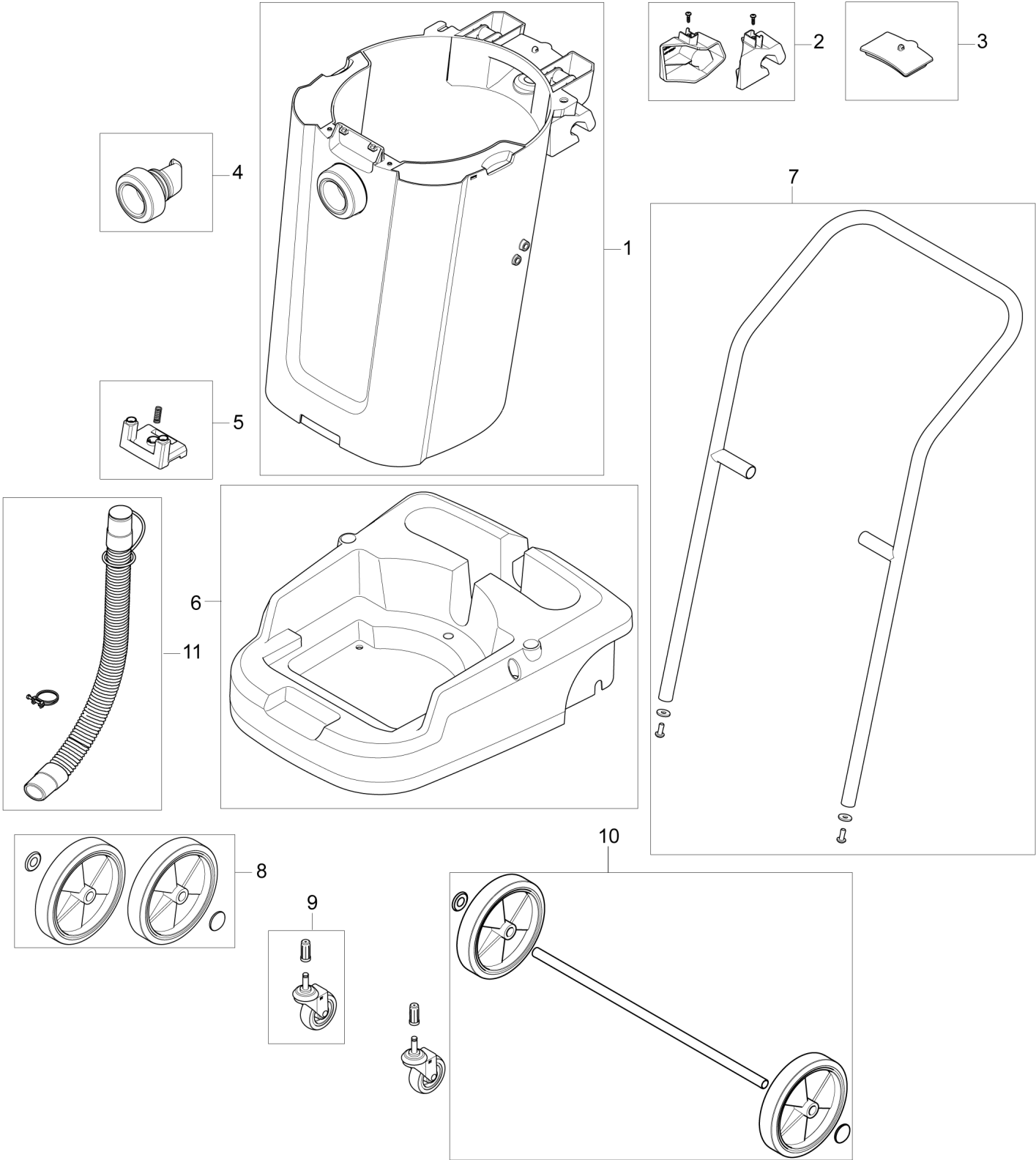
16-01-2013 11:05:56

Partlist : MAXXIII10 Container 55 BSF, BDF

Page : 1

IA	Pos. no.	Qty.	Item no.	Item Text
	1	1	107407261	
	10	1	107407272	
	11	1	107407273	
	2	1	107407263	
	2	1	107407265	
	3	1	107407266	
	4	1	107407259	
	5	1	107407268	
	6	1	107407270	
	7	1	107407271	
	8	1	140 9543 500	REAR WHEEL
	9	1	140 5476 500	WHEEL LINK TROLLEY 2-P

Model : 35605 MAXXI 55-1, MAXXI 75-1 CLARKE
Drawing : VL50011 Container 75 BSF, BDF



Model : 35605 MAXXI 55-1, MAXXI 75-1 CLARKE

16-01-2013 11:06:11

Partlist : MAXXIII12 Container 75 BSF, BDF

Page : 1

IA	Pos. no.	Qty.	Item no.	Item Text
	1	1	107407275	
	10	1	107407272	
	11	1	107407307	
	2	1	107407278	
	2	1	107407279	
	3	1	107407266	
	4	1	107407259	
	5	1	107407281	
	6	1	107407270	
	7	1	107407282	
	8	1	140 9543 500	REAR WHEEL
	9	1	140 5476 500	WHEEL LINK TROLLEY 2-P